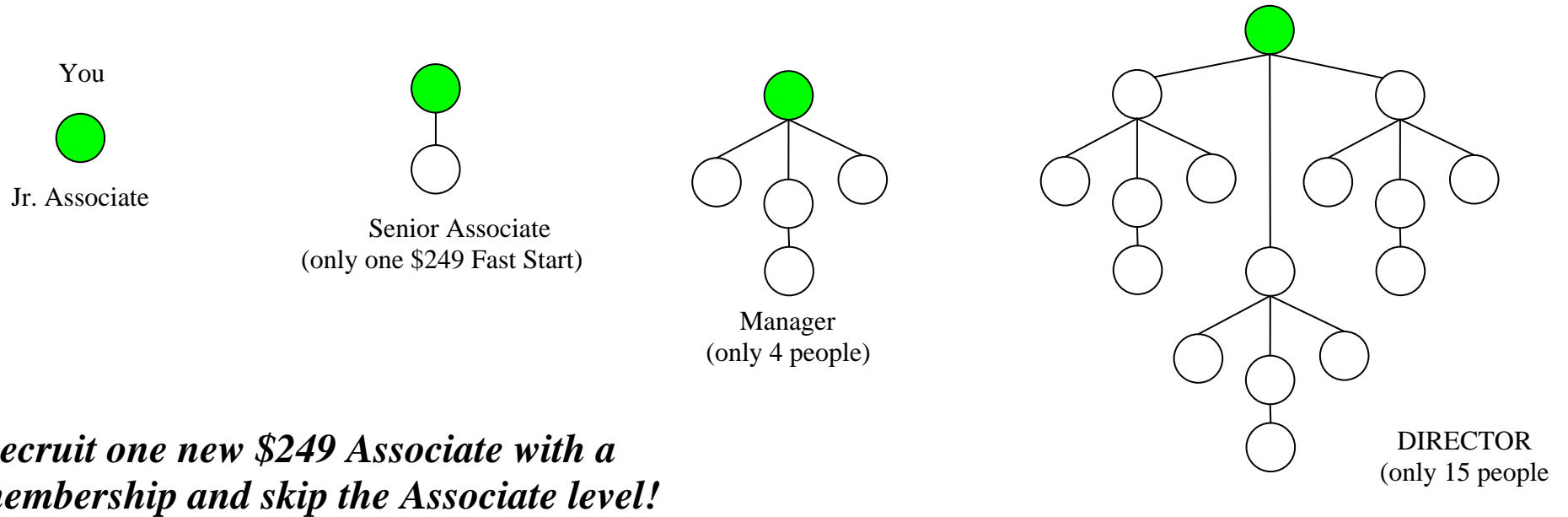
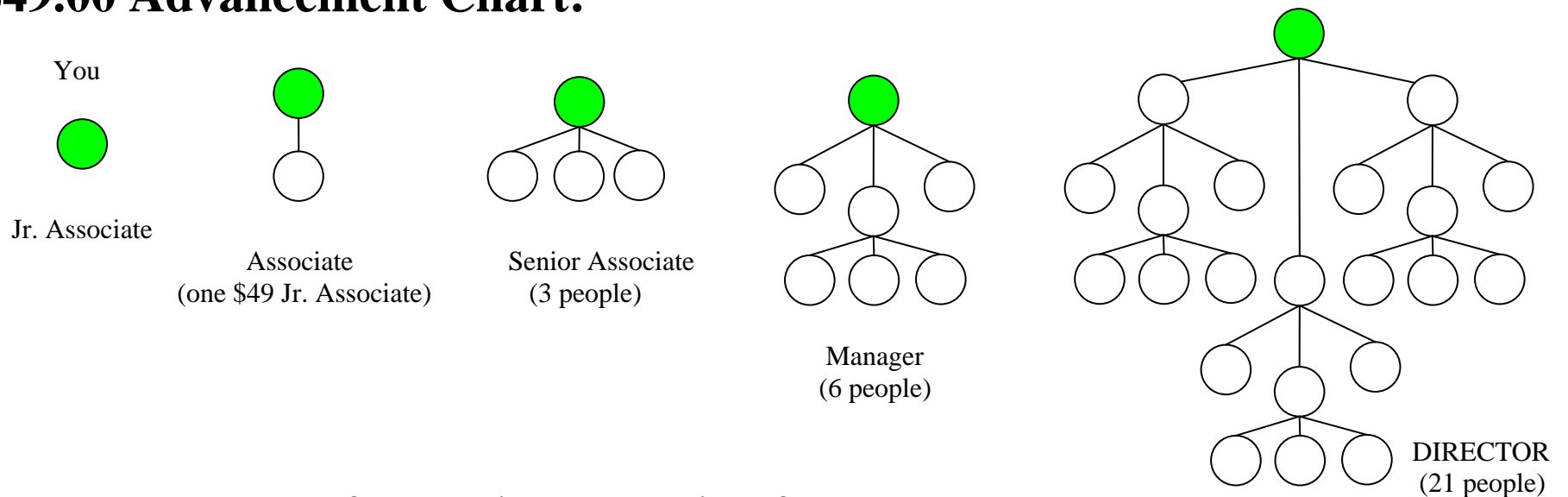


# \$249.00 Fast Start Advancement Chart!



# \$49.00 Advancement Chart!



**Be sure to see page two for a detailed explanation of these advancements.**

## **\$249.00 Advancement chart...**

Jr. Associate to Sr. Associate – recruit only one \$249 Fast Start Jr. Associate with a membership

Sr. Associate to Manager – recruit one Senior Associate leg and two additional first level \$249 Fast Start Associates

Manager to Director – help three people in different legs become Managers

Director to Executive Director (ED) – 75 membership counters in one of three ways:

- 1) Reach 75 counters yourself
- 2) If you are **Director Level and** have at least 1 Director leg and 3 personal counters you can count up to 25 counters from ANY leg to get 75
- 3) If you are **Director Level and** have less than three personal counters and at least 3 Director legs, you can count up to 25 counters from any of your Director legs

NOTE: All recruits MUST carry a membership\* to count for advancement.

(A \$249 Fast Start Associate which is placed, **WILL COUNT** for the Sponsoring Associates level advancement, but only after he/she has advanced to Senior Associate on their own efforts.)

\*A membership in a license state can be either a Family Plan or an IDT Shield membership.

\*A membership in a non-license state must be a Family Plan.

Mr. Stonecipher has made it even ridiculously easier to get to the money!!!

## **\$49.00 Advancement chart...**

Jr. Associate to Associate – recruit one \$49 Jr. Associate with a membership

Associate to Sr. Associate – recruit three Jr. Associates with a membership

Sr. Associate to Manager – help one person become a Sr. Associate

Manager to Director – help three people in different legs become Managers

Director to Executive Director (ED) – 75 membership counters in one of three ways:

- 1) Reach 75 counters yourself
- 2) If you are **Director Level and** have at least 1 Director leg and 3 personal sales you can count up to 25 counters from ANY leg to get 75
- 3) If you are **Director Level** have less than three personal counters and at least 3 Director legs, you can count up to 25 counters from any of your Director legs

NOTE: All recruits MUST carry a membership\* to count for advancement.

(A Junior Associate which is placed, **WILL COUNT** for the Sponsoring Associate's level advancement, but only after he/she has advanced to Associate Level on their own efforts.)

\*A membership in a license state can be either a Family Plan or an IDT Shield membership.

\*A membership in a non-license state must be a Family Plan.